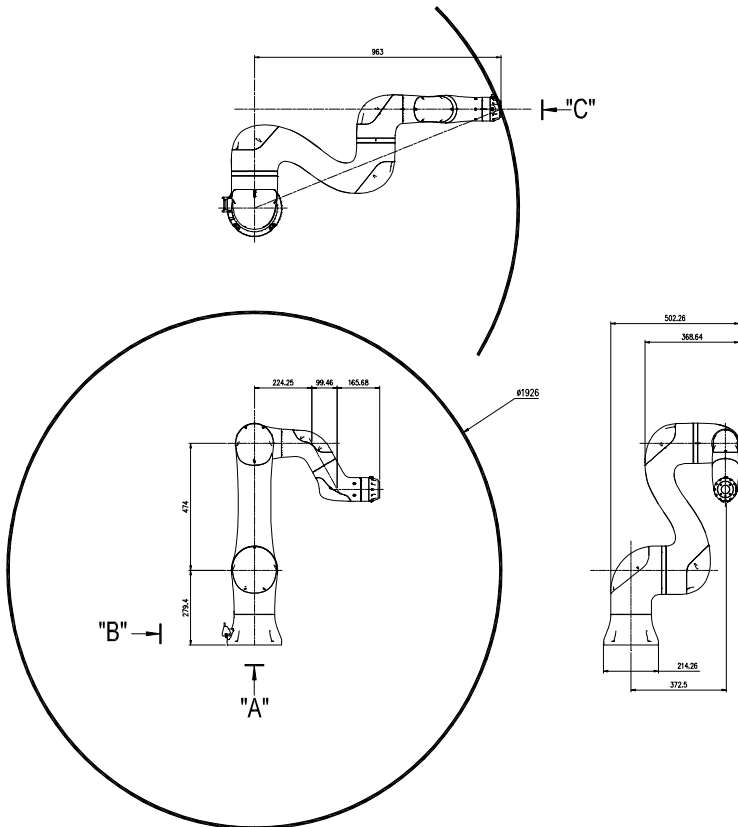


YL015

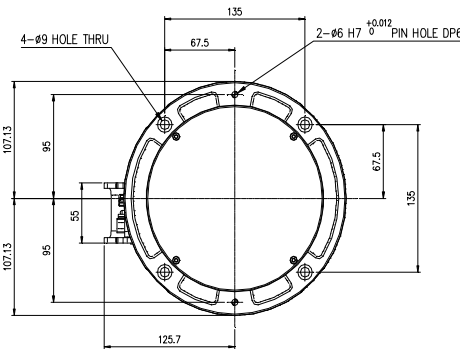
Installation method		Application	
Floor	●	Spot welding	●
Ceiling		Arc welding	●
Wall surface		Handling	●
		Assembly	●
		Sealing	●
		Painting	●



View A: Dimensional drawing for the floor installation of the body

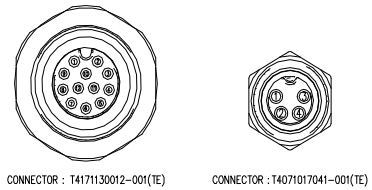
Item	Specification
Robot model	YL015
Payload	15 kg
Structure	Articulated
Degree of freedom	6 axes
Drive system	AC SERVO MOTOR
Max. working envelope	A S Swivel $\pm 3.142 \text{ rad } (\pm 180^\circ)$
	H Horizontal $+2.37 \sim -0.79 \text{ rad } (+270^\circ \sim -90^\circ)$
	V Vertical $\pm 3.142 \text{ rad } (\pm 180^\circ)$
	Wrist R2 Rotation 2 $\pm 3.142 \text{ rad } (\pm 180^\circ)$
	B Bending $\pm 3.142 \text{ rad } (\pm 180^\circ)$
Max. working speed	Wrist R1 Rotation 1 $\pm 3.142 \text{ rad } (\pm 180^\circ)$
	A S Swivel $3.142 \text{ rad } (180^\circ/\text{sec})$
	H Horizontal $2.182 \text{ rad } (125^\circ/\text{sec})$
	V Vertical $3.142 \text{ rad } (180^\circ/\text{sec})$
	Wrist R2 Rotation 2 $3.142 \text{ rad } (180^\circ/\text{sec})$
Wrist torque	B Bending $54.9 \text{ N.m } (5.6 \text{ kgf.m})$
	R1 Rotation 1 $27.4 \text{ N.m } (2.8 \text{ kgf.m})$
	R2 Rotation 2 $49 \text{ N.m } (5.0 \text{ kgf.m})$
Accuracy of position repeatability	$\pm 0.1 \text{ mm}$
Ambient Temperature	$0 \sim 45^\circ \text{C } (273 \sim 313 \text{K})$
Robot's Weight	43 Kg
Working envelope section area	963

*) When the optional limit switch is attached, the action range of the main axis will be limited (see the manual)



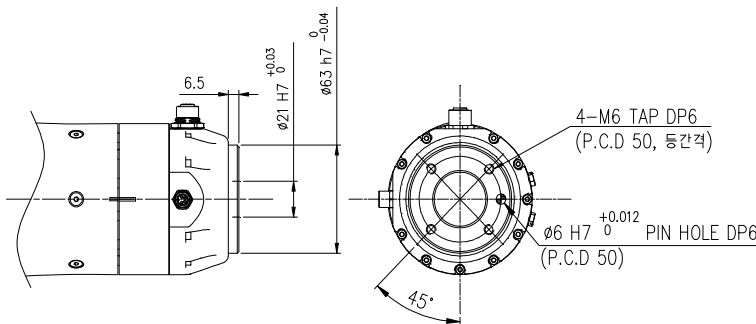
View C: Detailed drawing of the wrist attachment

View C: Application cable connection part

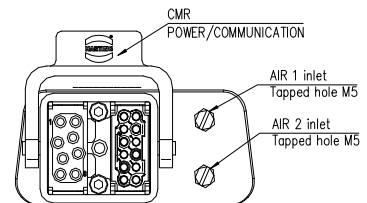


User I/O Part			
Pin No.	Description	Pin No.	Description
1	Digital out CH0	7	Digital in CH2
2	Digital out CH1	8	Digital in CH3
3	Digital out CH2	9	Analog in CH0
4	Digital out CH3	10	Analog in CH1
5	Digital in CH0	11	Voltage out
6	Digital in CH1	12	GND

EtherCAT Part	
Pin No.	Description
1	TX +
2	TX -
3	RX +
4	RX -



View B: Application cable connection part



** For product improvement, some of the ratings, specifications, dimensions, etc. are subject to changes without notice